

Sierra Wireless Wavecom Fastrack Xtend USB Driver Installation Guide

The USB driver is in the CD. Refer to *illustration 1* until 6 for guidance on installing the USB driver.

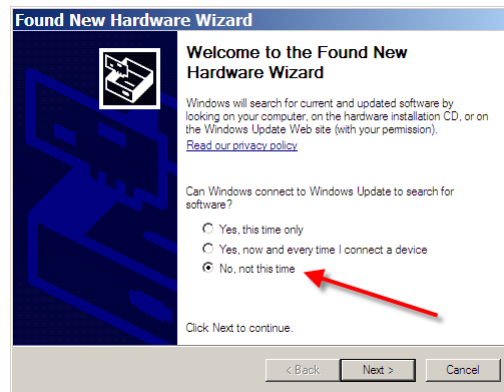


Illustration 1

Select "Install from a list or specific location" and browse in CD drive (refer to *illustration 2*)

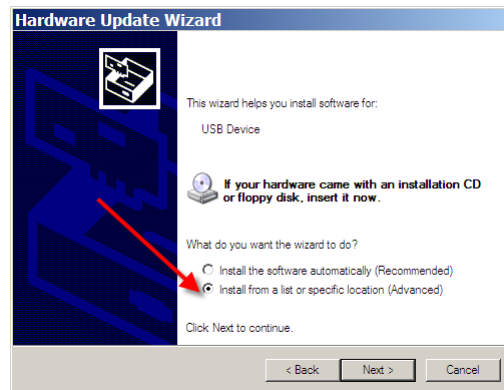


Illustration 2

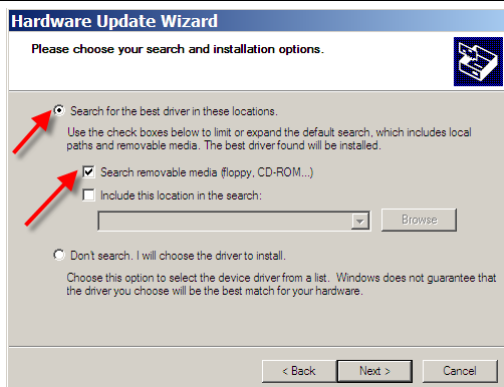


Illustration 3: search for the driver in the CD

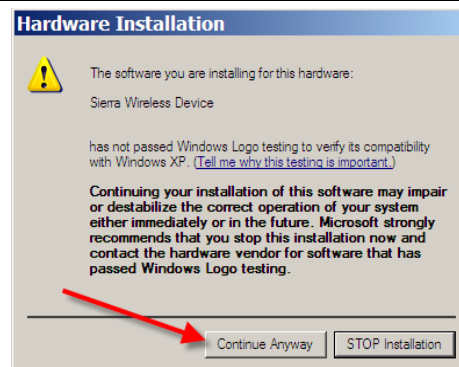


Illustration 4: click on "Continue Anyway"

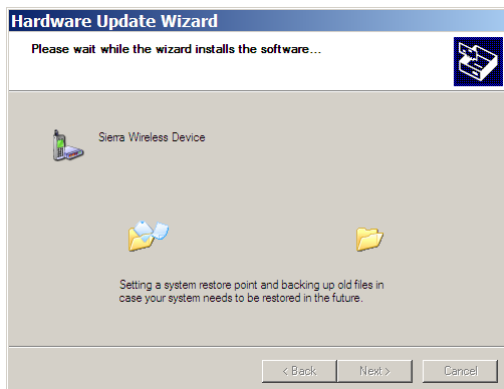


Illustration 5: installation will take awhile

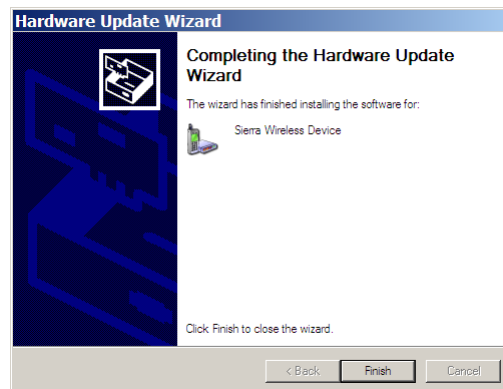


Illustration 6: click finish when it is done

After the USB driver is installed, check for the COM port number in ... (refer to *illustration 7*)

Device Manager > Modems > Sierra Wireless Device
(refer to *illustration 8*)

Modem > Port (refer to *illustration 9*)

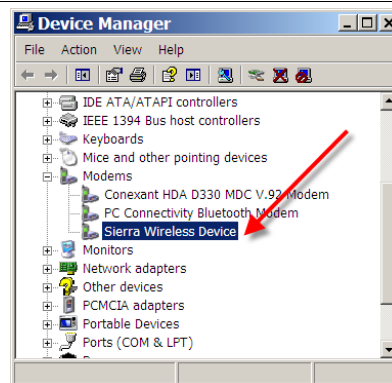


Illustration 7

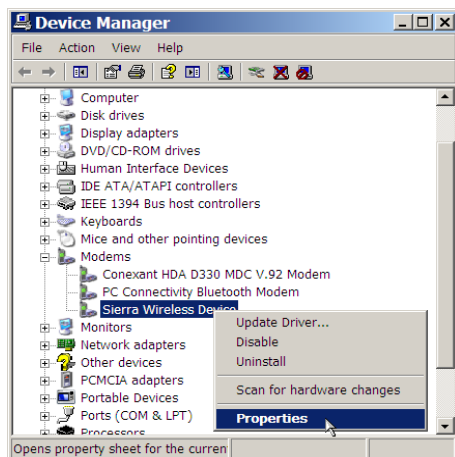


Illustration 8: Device Manager > Modems > Sierra Wireless Device

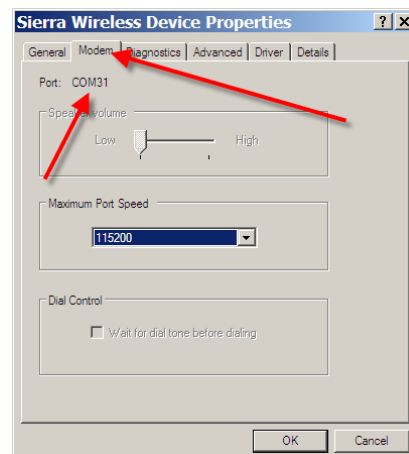


Illustration 9: Modem > Port, it is connected at number 31